

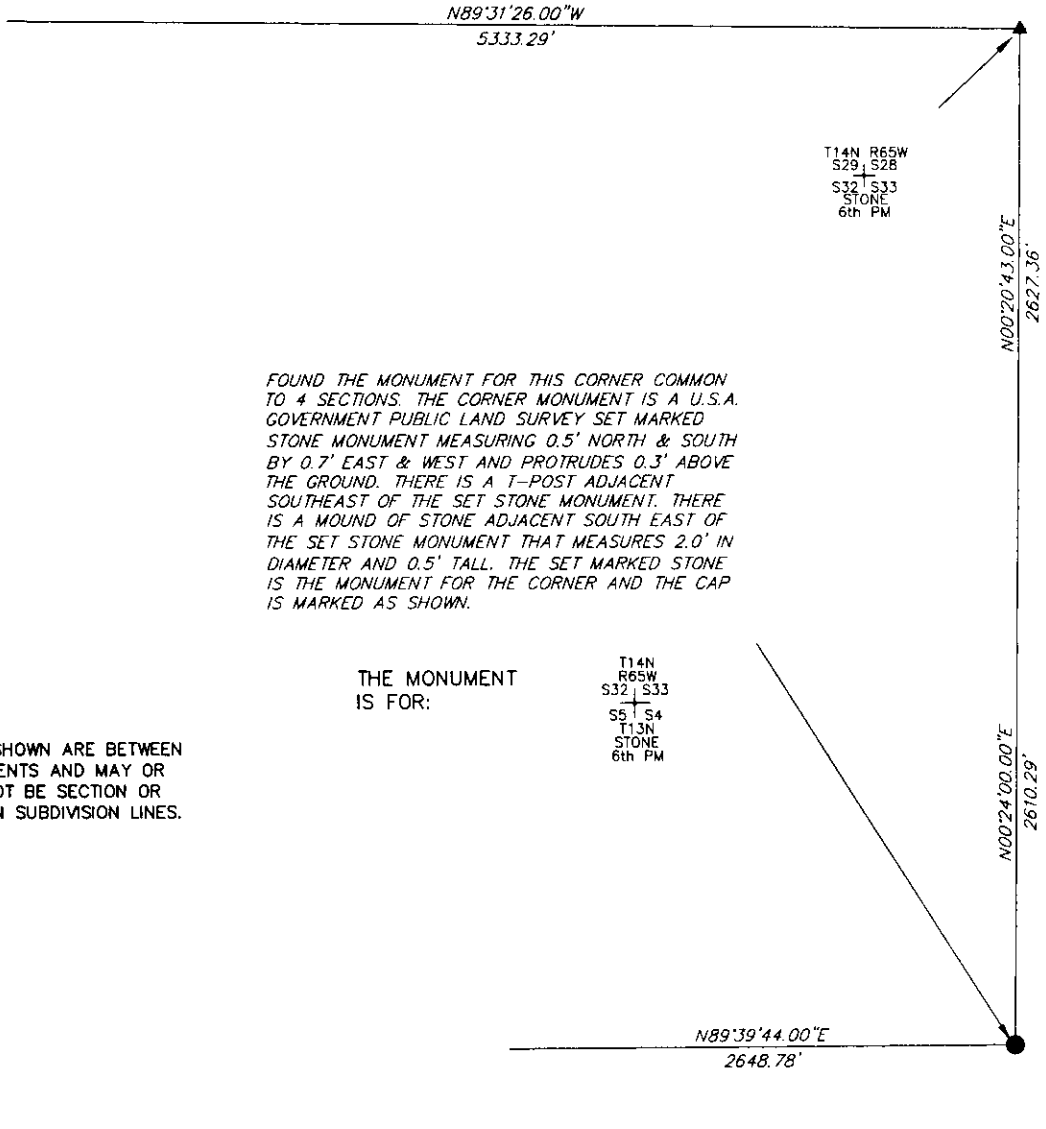
State of Wyoming Corner Record

CORNER PERPETUATION AND FILING ACT,

Regulations of the Board of Registration for Professional Engineers and Land Surveyors.)

Reverse side of this form may be used if more space is needed.

Record of original survey and citation of source of historic information (if corner is lost or obliterated). Description of corner monumentation evidence found and/or monument and accessories established to perpetuate the location of this corner. Sketch of relative location of monument, accessories, and reference points with course and distance to adjacent corner(s) (if determined in this survey). Method and rationale for reestablishment of lost or obliterated corner.

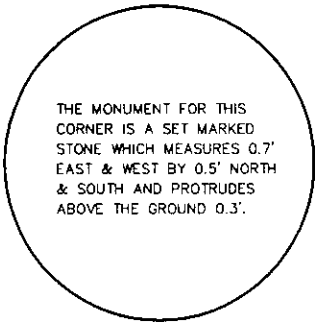


FOUND THE MONUMENT FOR THIS CORNER COMMON TO 4 SECTIONS. THE CORNER MONUMENT IS A U.S.A. GOVERNMENT PUBLIC LAND SURVEY SET MARKED STONE MONUMENT MEASURING 0.5' NORTH & SOUTH BY 0.7' EAST & WEST AND PROTRUDES 0.3' ABOVE THE GROUND. THERE IS A T-POST ADJACENT SOUTHEAST OF THE SET STONE MONUMENT. THERE IS A MOUND OF STONE ADJACENT SOUTH EAST OF THE SET STONE MONUMENT THAT MEASURES 2.0' IN DIAMETER AND 0.5' TALL. THE SET MARKED STONE IS THE MONUMENT FOR THE CORNER AND THE CAP IS MARKED AS SHOWN.

THE MONUMENT IS FOR:

T14N R65W
S32 | S33
+
SS1 S4
T13N
STONE
6th PM

NOTE:
LINES SHOWN ARE BETWEEN MONUMENTS AND MAY OR MAY NOT BE SECTION OR SECTION SUBDIVISION LINES.



THE MONUMENT IS MARKED

CORNER MONUMENT SYMBOLS

- RECORD IS FOR THIS CORNER MONUMENT.
- ▲ A RELATED CORNER OR WC MONUMENT.

SCALE 1"=1000'
(EXCEPT IN TRIVIAL CASES)
BEARINGS ARE RELATED TO WGS 84 WITH GPS OBSERVATIONS
DRAWN BY: AM
P.C. L. PENCE
COUNTY: LARAMIE

Date of Field Work: 05/13/2010 Office Reference: _____

CROSS INDEX DIAGRAM

1	2	3	4	5	6	7	8	9	10	11	12	13	14	15	16	17	18	19	20	21	22	23	24	25	
A																									A
B																									B
C		6																							C
D			5																						D
E				4																					E
F					3																				F
G						2																			G
H																									H
I																									I
J																									J
K																									K
L																									L
M																									M
N																									N
O																									O
P																									P
Q																									Q
R																									R
S																									S
T																									T
U																									U
V																									V
W																									W
X																									X
Y																									Y
Z																									Z

Firm/Agency, Address

UELS, LLC

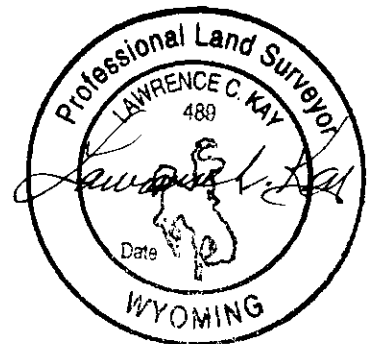
85 South 200 East

Vernal, Utah 84078

Telephone Number: 435-789-1017

This corner record was prepared by me or under my direction and supervision.

SEAL & SIGNATURE



RECORDED 12/08/2011 AT 1:19 PM REC# 581076 BK# 2249 PG# 402
DEBRA K. LATHROP, CLERK OF LARAMIE COUNTY, WY PAGE 1 OF 1